



Update, Layer and Share Digital Campus Maps Across Departments

Use dynamic mapping capabilities to improve safety planning, incident response, situational awareness, and communication. Maps are easy to edit and update. IT, Facilities and Safety/Security teams can define and customize map layers while collaborating across departments and with first responders.

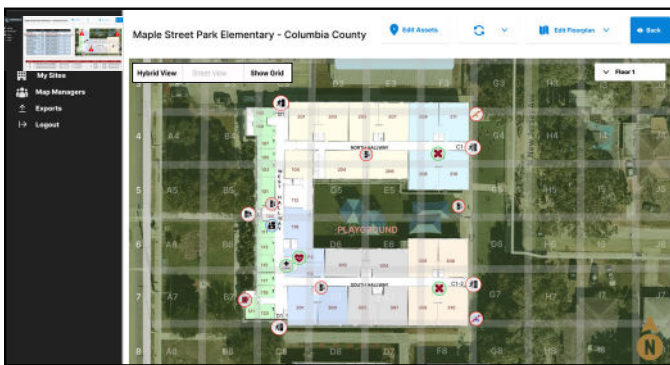



Maple Street Park Elementary - Columbia County
Edit Assets
Edit Floorplan
Back

Safety Asset Type	Quantity	Location	Requires Inspection
A.E.D. Kit	42	Maple St. Park Elem.	2
Fire Extinguisher	488	Maple St. Park Elem.	3
Fire Alarm Panel	21	Maple St. Park Elem.	2
Fire Alarm Ext. Panel	28	Maple St. Park Elem.	2
First Aid Kit	84	Maple St. Park Elem.	0
Bleed Control Kit	21	Maple St. Park Elem.	0
Security Camera	630	Maple St. Park Elem.	0
Key Lock Box	35	Maple St. Park Elem.	0
Key Card Reader	210	Maple St. Park Elem.	0
Water Shutoff	21	Maple St. Park Elem.	4
Gas Shutoff	21	Maple St. Park Elem.	15
Electrical Shutoff	21	Maple St. Park Elem.	0




Asset ID	Unique ID	Site Name	Asset Name	Floor	Latitude	Longitude	Data
988	1034eb95-42ba-4c64-b097-c637059a6601	Maple St. Park Elem.	Fire Extinguisher	1	29.9892	-84.5852	Chemistry Lab Rm 116
757	114fa8b2-6543-4f52-8c2f-632d3678730b	Maple St. Park Elem.	Fire Extinguisher	1	29.9894	-84.5855	Due for service 6/15
752	118b7b80-beff-4618-bbc6-47ce29a3f6d4	Maple St. Park Elem.	Fire Extinguisher	1	29.9898	-84.5853	Due for service 6/15

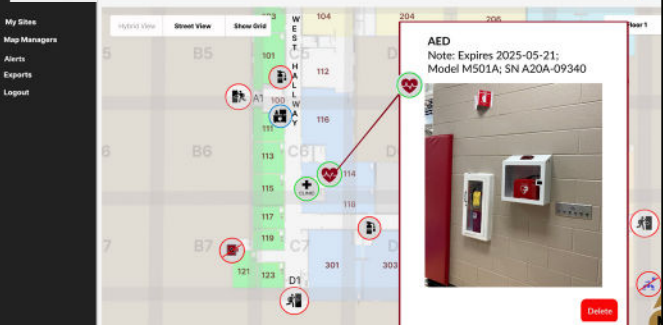


Safety Asset Management Taken to the Next Level
 Visualize all of the data relevant to your safety assets from one source. Run inventory counts, review inspection dates, and plan efficient routes—based on the precise physical location of assets—to address any maintenance required.


Precision GPS/GIS Location of Critical Safety Assets, Visually Mapped and Response-Ready

An emergency response often relies on critical safety assets. Knowing precisely where assets are located, that they've been properly maintained and are fully functional, is vital to managing through the crisis. Safety Blueprint eliminates your reliance on disparate spreadsheets and questionable version control.


Maple Street Park Elementary - Columbia County
Edit Assets
Edit Floorplan
Back



AED
 Note: Expires 2025-05-21;
 Model M501A; SN A20A-09340



Asset	Serial Number	Manufacturer	Inspected	Inspected By	Expiration/Ref
A.E.D.	R-c764vr0078	Phillips	2/16/2023	L. Thomas	5/20/2024

BE ALIGNED & PREPARED WITH CENTEGIX SAFETY BLUEPRINT

Safety and Facilities have a comprehensive view of their resources like utility shutoff locations, campus security resources, IT resources, evacuation points and another user-defined information. Designated safety and facility users can add or update safety information as the facility's structures and assets evolve.

Emergency Planners can define zones, update room names and numbers, evacuation routes, evacuation and reunification staging areas and shelter operations by color shades on the map.

Security Planners can create scenarios where they add assets, add pictures and information about existing assets, to support improvement requests to decision makers regarding needed additional security measures.

First Responders have immediate access to relevant campus information that allows for faster, more effective response. Information such as locations of utility shutoff locations, AEDs, fire suppression equipment, alarm panels and cameras are all readily displayed for enhanced situational awareness.

CAD IN THE CLOUD

- Make architectural changes to structures with a scaled drawing
- Add assets of all types to the maps at any time
- Share and adjust maps prior to publishing
- Version control enables maps to be rolled back

MULTIPLE LAYERS BUILT ON MAP FOUNDATION

- Safety, Security, IT and Facilities each have a custom map layer with their assets
- Add, move, change assets as needed
- Changes to the core architectural map roll forward and are reflected on each layer

ACTIVE DIRECTORY/SINGLE SIGN-ON INTEGRATIONS

- Map utilized by multiple applications including **Visitor Management, Safety Planning, Incident Response, and Reunification** aligning all stakeholders with the most current information

SINGLE MAP SOURCE FOR ALL APPLICATIONS

- Assign access to maps and editable layers based on user logins
- Use assigned roles to authorize/deauthorize access to maps by external groups like local governments and software companies

PRECISE ASSET & ALERT LOCATION FOR RESPONDERS

- Safety and security map layer provided at no additional cost with **CENTEGIX CrisisAlert™** and **Safety Platform**
- **CrisisAlert** locating assets included on the safety layer



Learn more today.

info@centegix.com | centegix.com

