


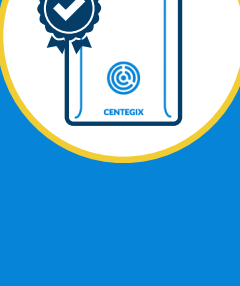
School Safety Trends for 2025

TOGETHER, TRAINING AND TECHNOLOGY SAVE LIVES


The Trends at a Glance




The Prioritization—and Payoff—of Data-Informed Decision Making




Wearables Are the Standard in Emergency Response



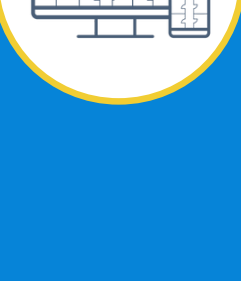
The Benefits of Creating a Culture of Safety



On-Site Notifications Must Reach Everyone in an Emergency

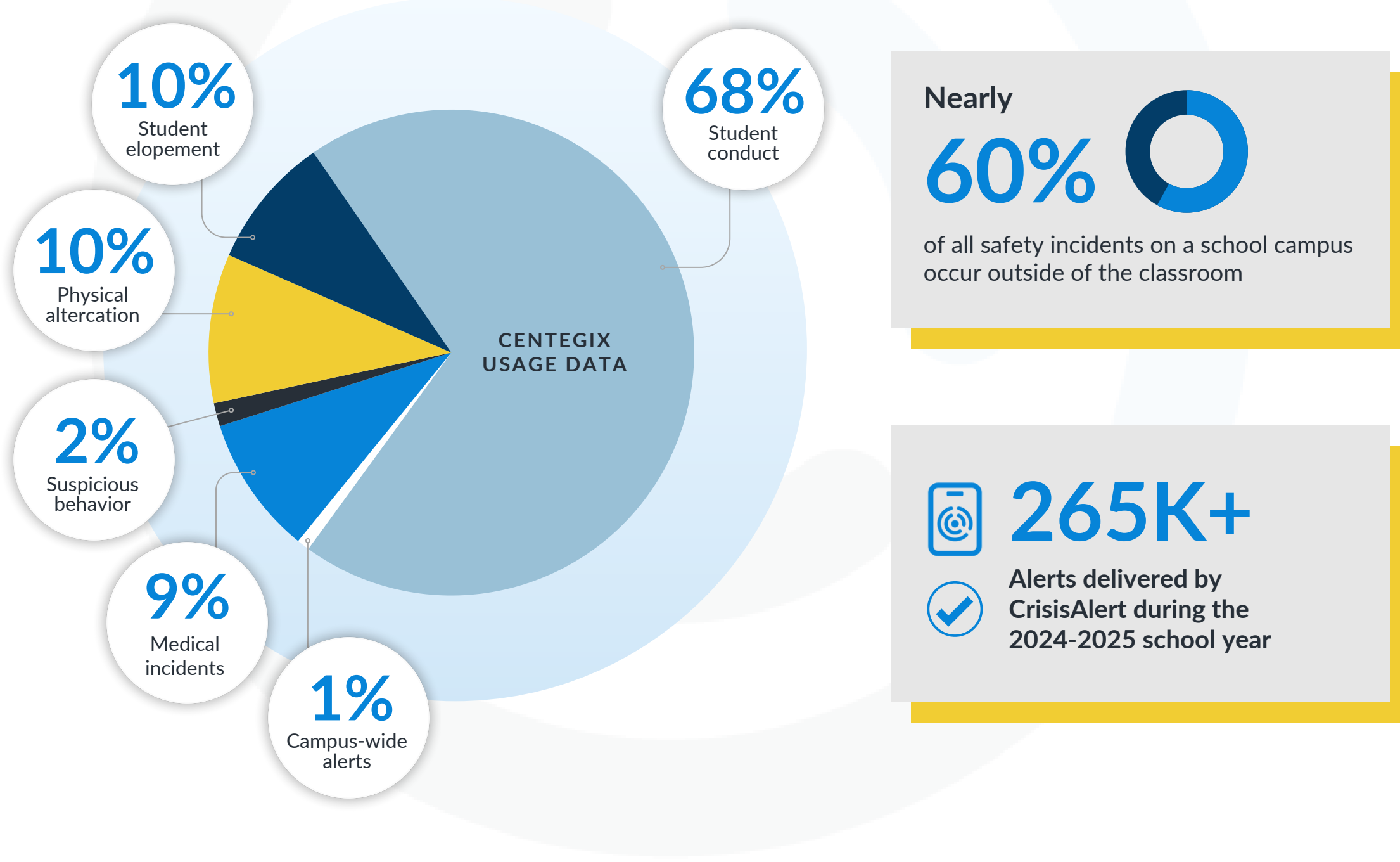


The Necessity of Interoperability in Safety Technology

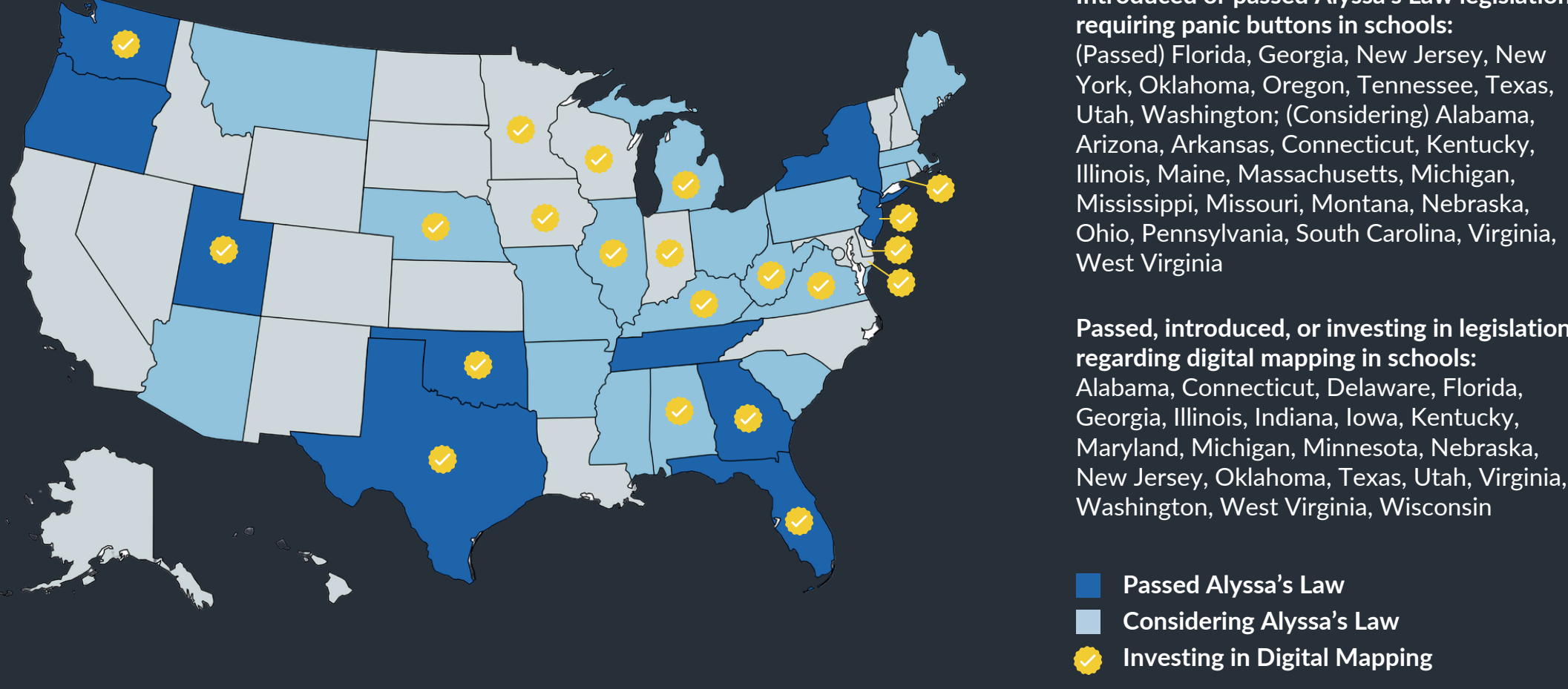


Mapping Is Critical for Emergency Response

Examining Safety Incidents in K-12 Schools



State Legislatures Prioritizing School Safety



Safety Trends in Action

Wearables Support Special Education Staff and Students

Meade County chose CrisisAlert to help mitigate communication delays that led to escalated incidents that left special education staff feeling unsupported and unsafe. Since implementing the wearable, behavioral incidents are down, staff feel less isolated, and student outcomes have improved.

Mark Martin, Superintendent, Meade County School District, KY



Creating a Culture of Safety Using Educator-Trusted Technology

Little Rock School District previously had a mobile phone-based safety app to report emergencies that less than 20% of staff used. They needed a solution that was accessible, easy to use, and already trusted by educators. With CrisisAlert, they've achieved full user adoption by choice, with staff reporting feeling more protected and safe while at work.

Ron Self, Former Director of Safety & Security, Little Rock School District, AR



Mapping Enables Rapid Emergency Response Anywhere on Campus

When a student at Flomaton Elementary School began choking after a rock became lodged in his throat during recess, a staff member activated her CrisisAlert badge. On-site responders received immediate notification and precise alert location information on a campus map. They arrived on scene in under 60 seconds, and the obstruction was successfully cleared.

Courtney McBride, Principal, Flomaton Elementary School, Escambia County Schools, AL



Critical Components of Emergency Response Solutions



Discreet, wearable panic buttons



Strobes for visual notification and incident location accuracy



Digital maps with safety assets



Immediate notification to admins and 911



Audio notifications of lockdowns and lockdown protocols



Precise room- and floor-level location accuracy



Total campus coverage, including outdoors



Easy to use, easy to train on, and easy to maintain



Does not rely on Wi-Fi or cellular connectivity