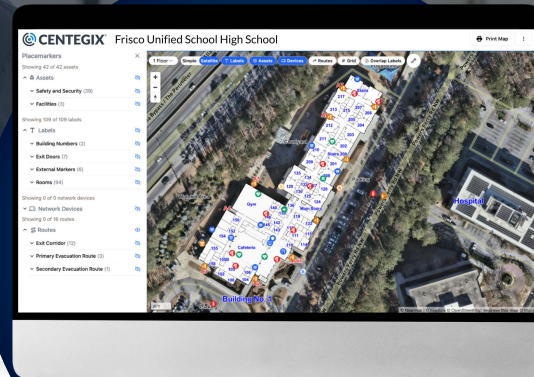


10 Reasons CENTEGIX Safety Blueprint® is the Best Choice for Dynamic Digital Maps



Safety Planning Made Simple with Safety Blueprint®

CENTEGIX Safety Blueprint innovates incident response by utilizing dynamic mapping that exceeds state mapping requirements to drive better outcomes when EVERY. SECOND. MATTERS®. By providing a single source of truth, Safety Blueprint ensures seamless integration with emergency services, empowering first responders with access to the latest, most accurate site information for a faster and more effective response.

- ✓ Map data retained locally with full rights to share with emergency response providers and partners.
- ✓ Update maps anytime, with changes auto-synced across all safety systems for accuracy.
- ✓ Integrates with public safety software without extra software or fees.
- ✓ Printable, electronically shareable, mobile compatible in free open source software.
- ✓ Oriented to true north with x-y grid references.
- ✓ Floor plans overlaid on current aerial imagery.
- ✓ Clearly labeled rooms, hallways, doors, AEDs, buildings, etc.
- ✓ Created, stored and maintained in the U.S.
- ✓ Changes to your maps are automatically sent to local responding agencies.
- ✓ No fee or special software required to share maps with Response and Emergency Management Agencies.

Be Aligned and Prepared with CENTEGIX Safety Blueprint.

Learn how Safety Blueprint can help you optimize incident response, safety planning and visitor management.

[LEARN MORE](#)

